

# INNOVATIVE PRECISION

INTELLIGENT MACHINING SOLUTIONS

2902 American Way - Ogden, UT 84401 - Toll Free: 1.888.213.5510 - Fax: 801.334.6327 - [www.innovativeprecision.com](http://www.innovativeprecision.com)

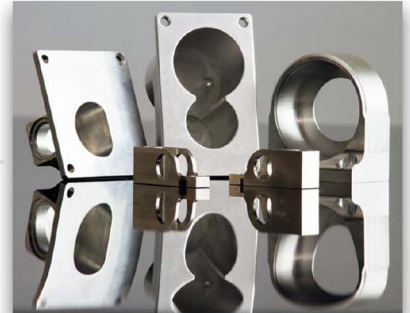
## Qty (5) 5-AXIS MULTI-TASKING CNC MILL / LATHE



### MAZAK VC-500 A 5X

5 Axis Machining Center  
21.85" (X) x 19.85" (Y) x 20.07" (Z)  
12000k RPM Spindle  
40 tool Tool Changer

Work Place Sample



Work Place Sample



### MAZAK VARIAXIS 500-5XII

5X (5 Axis) Machining Center  
20.8" (X) x 20.8" (Y) x 18.4" (Z)  
120 Tool Magazine  
Equipped w/ Dual Pallet  
18,000 RPM Spindle  
1000 psi Super Flow Coolant  
Reinshaw Tool & Part Probing



### MAZAK VARIAXIS 500

5x (5 Axis) Machining Center  
20.8" (X) x 20.8" (Y) x 18.4" (Z)  
Equipped w/ Dual Pallet Changer

Work Place Sample



Work Place Sample



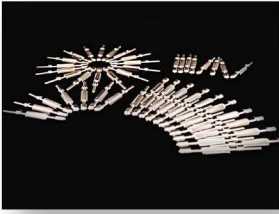
### OKUMA

LB3000EX-11/800MYW  
Y-Axis Milling Capability  
10" Chuck Main Spindle  
8" Chuck Sup Spindle  
40" Turning Length  
Equipped w/Bar Feeder  
(2.55" Capacity)



2902 American Way - Ogden, UT 84401 - Toll Free: 1.888.213.5510 - Fax: 801.334.6327 - [www.innovativeprecision.com](http://www.innovativeprecision.com)

Work Place Sample



## GANESH 32CS 7-AXIS

Twin Spindle Mill Turn Center W/Full "Y"  
Equipped w/Bar Feeder 1 3/8" Capacity  
11 Live Tools



## Qty (5) HORIZONTAL MACHINING CENTERS



### Makino a51nx

4 Axis Horizontal Machining Center  
Maximum Workpiece 24.8" diameter x 35.4"  
(Qty 3)

Work Place Sample



Work Place Sample



### MAZAK NEXUS 5000 II

Horizontal Machining Center  
28.74"(X) x 28.74"(Y) x 29.13"(Z)  
Dual-Pallet, Pallet Changer



### OKUMA MA-400HA

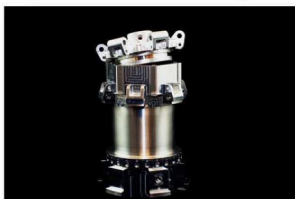
Horizontal Machining Center  
24" (X) x 24" (Y) x 22" (Z)

Work Place Sample



## Qty (9) 3 & 4 AXIS VERTICAL MACHINING CENTERS

Work Place Sample



### MAZAK VCN-700D/40

Vertical Machining Center  
(4 Axis) 60"(X) x 27"(Y) x 25"(Z)







### MAZAK 510C / 410B

Vertical Mill  
41.34"(X) x 20.08"(Y) x 20.08"(Z)  
3 & 4 Axis Capable  
(Quantity- 4)

Work Place Sample



Work Place Sample

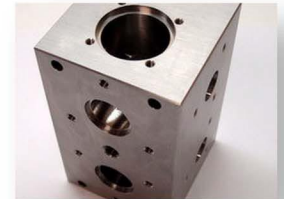


### DOOSAN DNM 500II

4th Axis VMC's  
40" (X) x 21.2" x (Y) x 20.05" (Z)  
(Quantity-3)



Work Place Sample



### DAEWOO DMV 3016

Vertical Mill  
30.0" (X) x 16.0" (Y) x 18.0" (Z)

## 2AXIS MILLS

### PROGRAMMABLE MILLS

EZ TRAK 2-AXIS MILLS  
32" (X) x 14.5"(Y) x 12"(Z)  
(QTY- 2)

SHARP 2-AXIS MILL  
30"(X) x 12"(Y) x 16"(Z)

## CNC LATHES / TURN CENTERS

### MORI-SEIKI SL150

CNC Turning Center  
w / Programmable Tailstock  
With Live Tooling & Bar Feeder

Work Place Sample



### DAEWOO LATHE

CNC Turning Center  
w / Bar Feeder

Work Place Sample



### KIA 21B TURN CENTER

CNC Turning Center w/ Programmable  
Tailstock & Bar Feeder

Work Place Sample



# EDM EQUIPMENT

---



## Charmilles wire EDM Model Cut 20P

Travels; 349.758 mm (13.77") (X)  
249.936 mm (9.84") (Y)  
254 mm (10") (Z)



## Charmilles Sinker EDM Model Form 2

Travels: 320.04 mm (12.6") (X)  
249.936 mm (9.84") (Y)  
249.936 mm (9.84") (Z)



# CNC SOFTWARE & PROGRAMS

## SOLID WORKS

3-D Mechanical CAD Program

## FEATURE CAM 3-D

Milling & Solid Surfacing

2 ½ D, 3D, 4, & 5 Axis

Tombstone, Mill Turn, Wire EDM

8 Stations

## PART MAKER

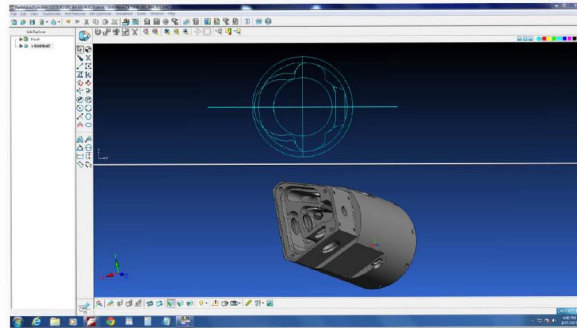
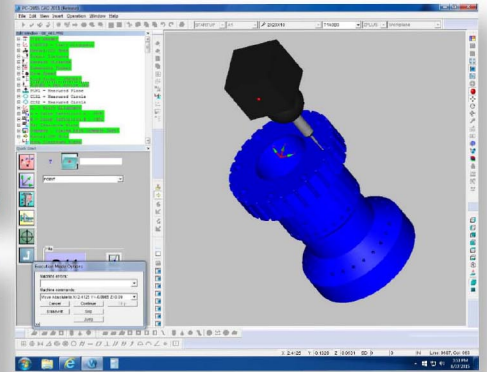
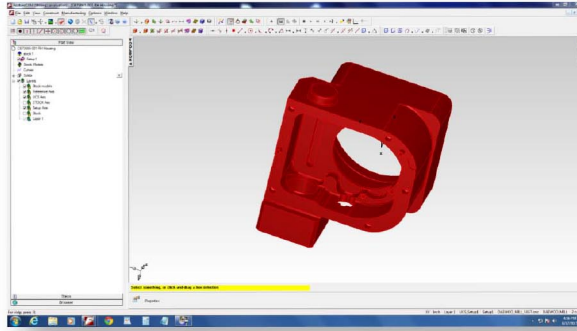
Mill-turning, Swiss Machining

C Axis, Y Axis, 4&5 Axis, Surface

Machining, 5 Axis

## PC DIMIS

## CMM MANAGER



## QUALITY INSPECTION DEPARTMENT



TEMPERATURE CONTROLLED CLIMATE ( INSPECTION ROOM ) TO ENSURE ACCURACY

## CMM MACHINES

Brown & Sharpe PFX B454

Measuring Range: 458 mm (18") (X) x 510 mm (20"0) (Y)  
x 406 mm (16")(Z)

Brown & Sharpe 9.20.8

Range: 900 mm (35.43") (X) x 2000 mm (78.74") (Y) x  
800 mm (31.50")(Z)

Nikon Altera

10.10.8

Range: 1016 mm (40") (X) x 1016 mm (40") (Y) x  
812.8 mm (32")(Z)



## SALES CONTACTS

JOSH EMBREE-CEO / Business Development

Phone (Office) - (801) 334-6317

Email- [jembree@innovativeprecision.com](mailto:jembree@innovativeprecision.com)

TRAVIS BOX - GM

Phone (Office) - (801) 334-6317

Email- [tbox@innovativeprecision.com](mailto:tbox@innovativeprecision.com)

# *INNOVATIVE PRECISION*

INTELLIGENT MACHINING SOLUTIONS

2902 American Way - Ogden, UT 84401 - Toll Free: 1.888.213.5510 - Fax: 801.334.6327 - [www.innovativeprecision.com](http://www.innovativeprecision.com)