

# INNOVATIVE PRECISION

INTELLIGENT MACHINING SOLUTIONS

WE HELP KEEP AMERICA

SAFE



MOVING



HEALTHY



COMPANY  
Portfolio

# INNOVATIVE PRECISION

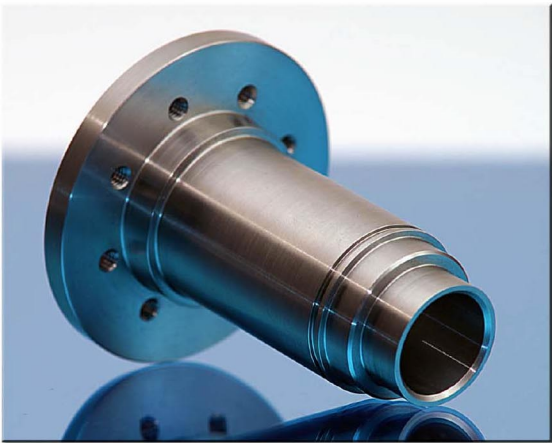
INTELLIGENT MACHINING SOLUTIONS

## WE HELP KEEP AMERICA SAFE, MOVING AND HEALTHY

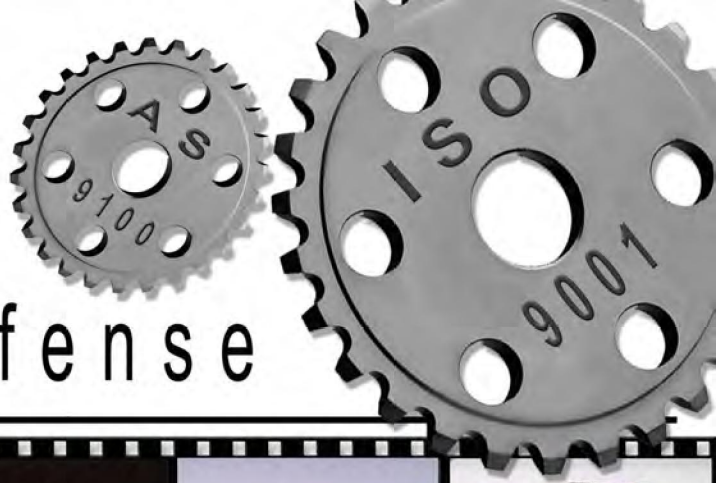


Innovative Precision is a 21st Century CNC machine shop utilizing the latest technology in precision machining, and has always focused on providing the highest quality machined parts at competitive prices.

Since its inception, Innovative Precision has established itself as a leader for precision machined components, and has been working on a "partner level" with companies like Moog, Boeing, Northrop Grumman, Raytheon, L-3 Communications and Parker Hannifin for many years. IP maintains both AS9100 and ISO9001 certifications to ensure quality and consistency throughout the manufacturing process. We have the experience and equipment to manage production quantities and are positioned to grow with customer demands.



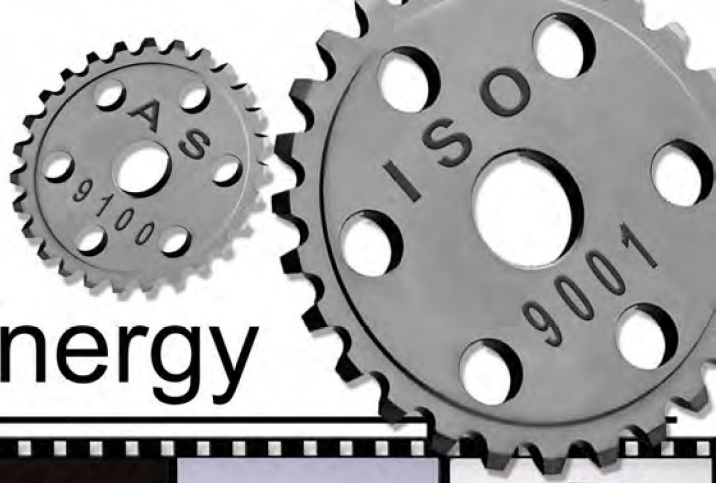
**INNOVATIVE PRECISION**  
INTELLIGENT MACHINING SOLUTIONS



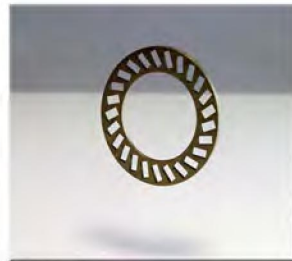
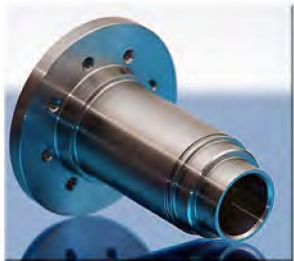
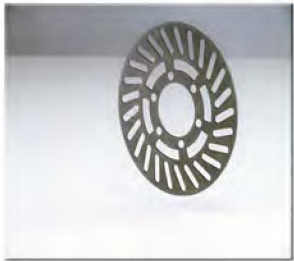
# Aerospace / Defense



**INNOVATIVE PRECISION**  
INTELLIGENT MACHINING SOLUTIONS

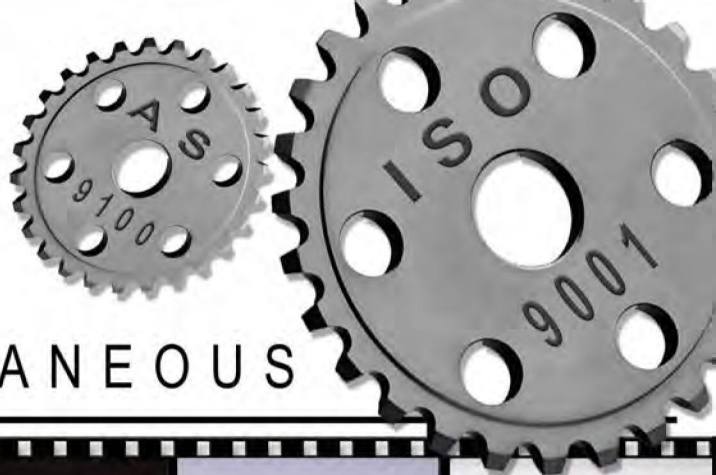


# Gas / Oil & Energy

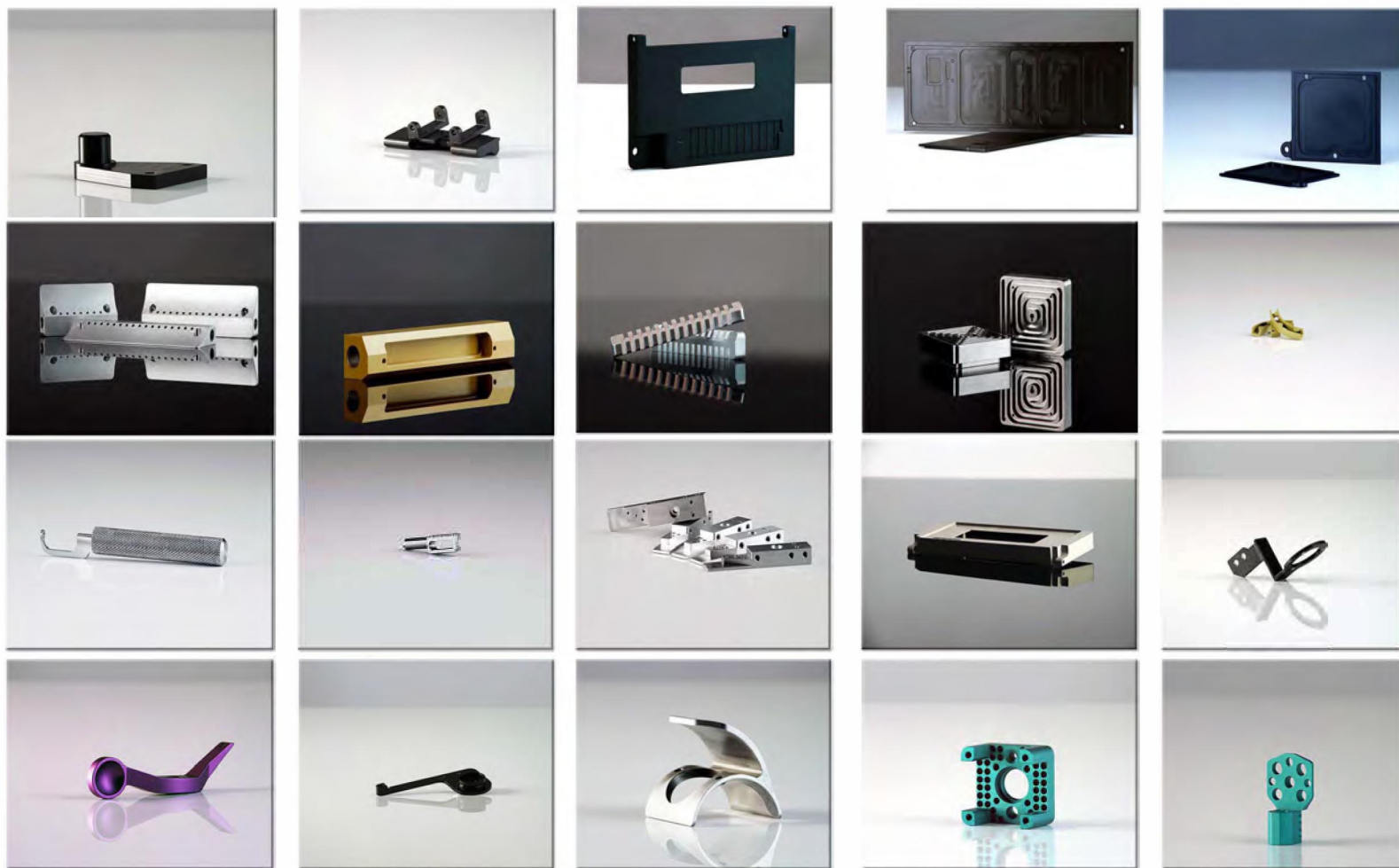
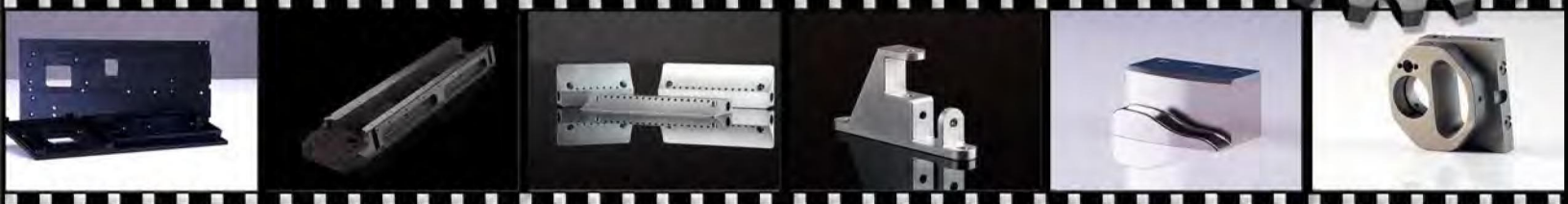


# INNOVATIVE PRECISION

INTELLIGENT MACHINING SOLUTIONS



## MEDICAL / MISCELLANEOUS



### SALES CONTACTS

JOSH EMBREE-CEO / Business Development

Phone (Office) - (801) 334-6317

Fax - (801) 334-6327

Cell - (310) 433-3387

Email- [jembree@innovativeprecision.com](mailto:jembree@innovativeprecision.com)

Address- 2902 American Way

Ogden, UT 84401

TRAVIS BOX - GM

Phone (Office) - (801) 334-6317

Fax - (801) 334-6327

Cell - (310) 940-2510

Email- [tbox@innovativeprecision.com](mailto:tbox@innovativeprecision.com)

Address- 2902 American Way

Ogden, UT 84401